

# Maintenance instructions ClimaRad Care H1C-C

## Maintenance frequency for filters

When should you replace the filters?

- With normal use, every 2 years or earlier if the message 'Filter vervuild' appears on the display (for example in homes and offices).
- In the case of intensive use, after 1 year or earlier if the message 'Filter vervuild' appears on the display (e.g. for care homes and schools).

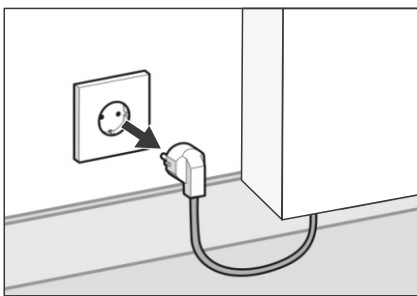
Go to [www.climaRad.nl/filtervervangng](http://www.climaRad.nl/filtervervangng) to view the instruction video.

### Ordering filters

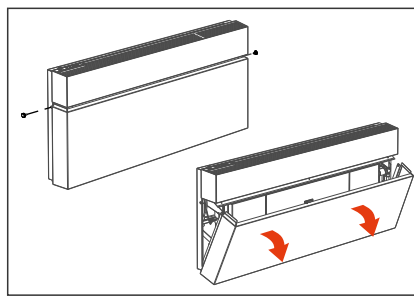
Order new filters at

[www.climarad.nl/filters](http://www.climarad.nl/filters)

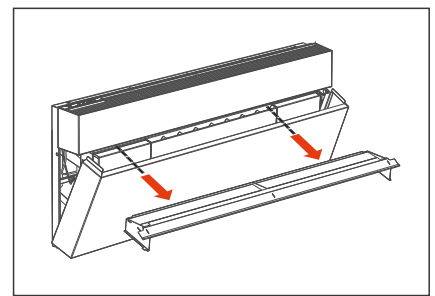
## Replacing air supply filters



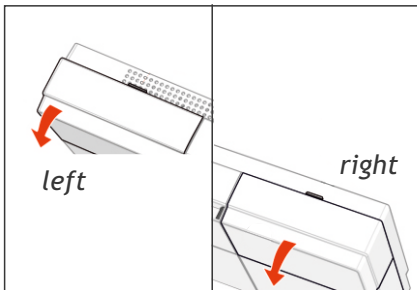
1. First switch the device off by pulling the plug out of the socket.



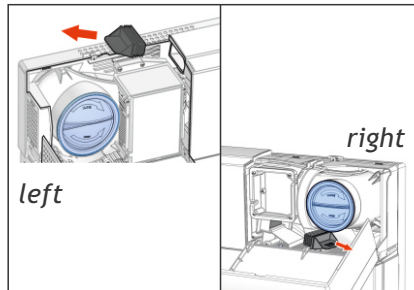
2. Unscrew the locking screws from the housing. The lower housing now moves forward.



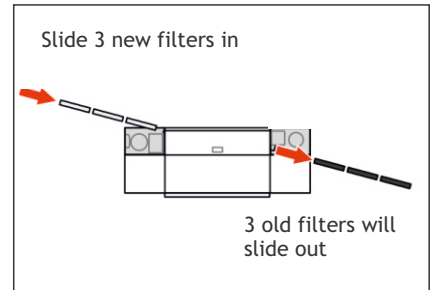
3. Remove the air distributor.



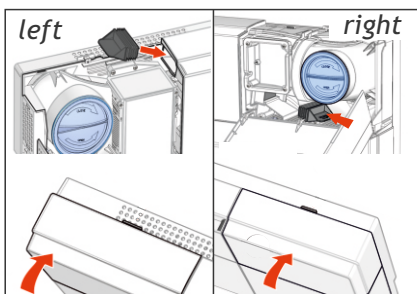
4. Open both valves by pulling them towards you.



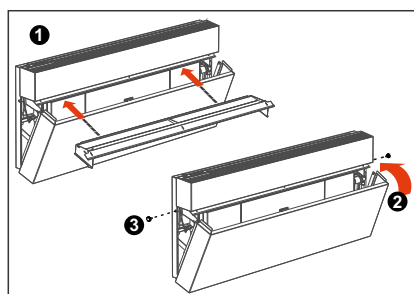
5. Remove the black caps.



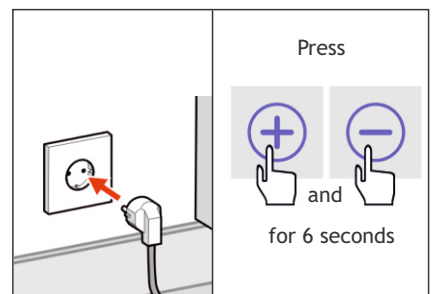
6. Slide three new filter elements into the device on the left side. The old filter elements are automatically ejected from the right side.



7. Put the two black filter caps (left and right) back in position and close both valves again.



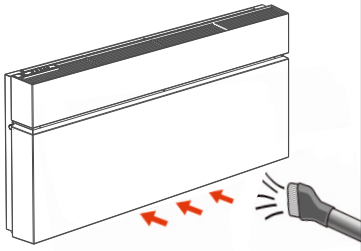
8. Reinstall the air distributor (1), tilt the lower housing back in position (2), and tighten the screws again (3).



9. Put the plug back into the socket and reset the filter hour counter (Press + and - simultaneously for 6 seconds). The 'filter vervuild' message will now disappear.

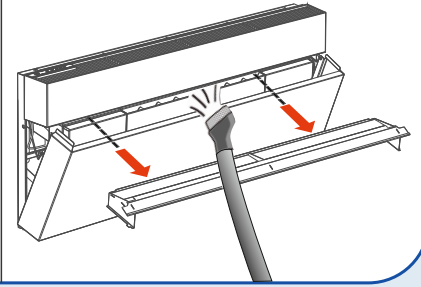
**Important:** Only reset the filter hour counter if you have replaced the filters.

## Cleaning the air output filters and coarse filter

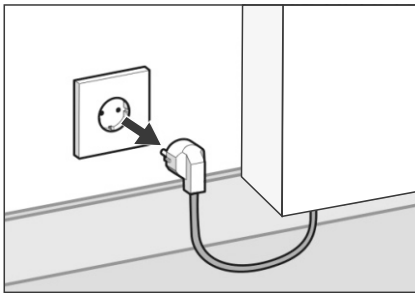


The air output filters are located at the bottom of the device. Vacuum the visible dirt off the filters. This guarantees the air flow. You do not need to remove the air output filters to do this.

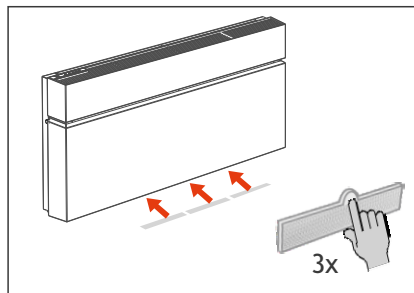
The coarse filter is located under the convector, above the air distributor. First remove the air distributor and vacuum the visible dirt off the filter.



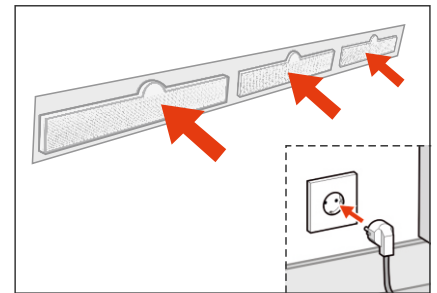
## Replacing air output filters



1. First switch the device off by pulling the plug out of the socket.

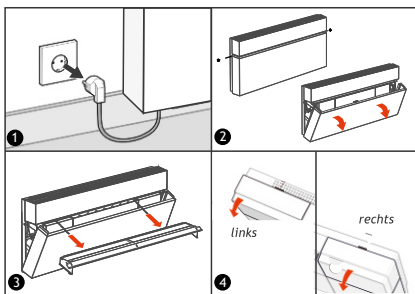


2. The output filters (3 pieces) are located at the bottom of the device, in the middle. These can be removed by placing a finger behind the notch.

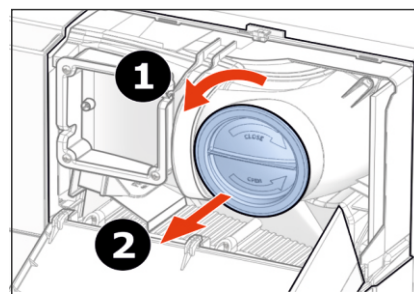


3. Push 3 new filters into the holders and then push the plug back into the socket.

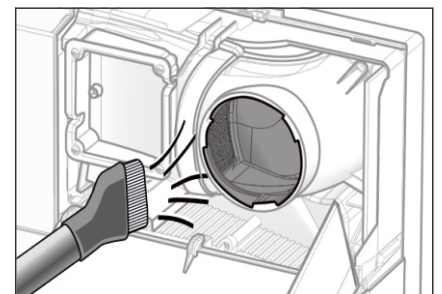
## Cleaning the air ducts



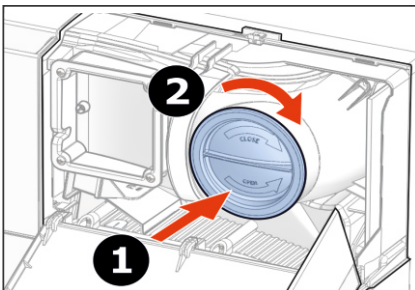
First follow steps 1 to 4 of 'replacing the air supply filters'.



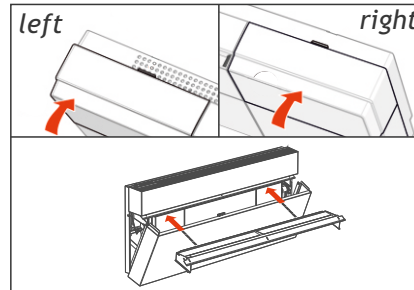
5. Turn both blue caps anti-clockwise and then remove them.



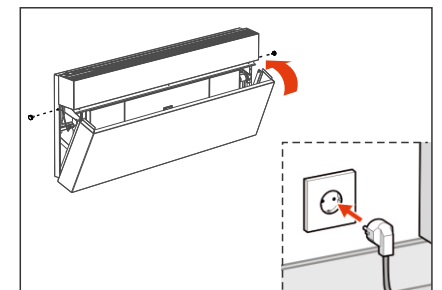
6. Remove dirt from both ducts with a vacuum cleaner or a soft cloth (do not use water).



7. Push both blue filter caps back in completely in order to ensure correct operation and screw them back into position.



8. Close the valves and re-install the air distributor.



9. Tilt the lower housing back and tighten the screws again. Then put the plug back into the socket.