

Maintenance Instructions ClimaRad Verti

Maintenance frequency for filters

When should you replace the filters?

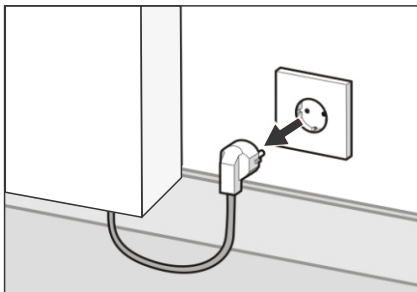
- With normal use, every 2 years or earlier if the message 'Filter vervuild' appears on the display (for example in homes and offices).
- In the case of intensive use, after 1 year or earlier if the message 'Filter vervuild' appears on the display (e.g. for care homes and schools).

Ordering filters

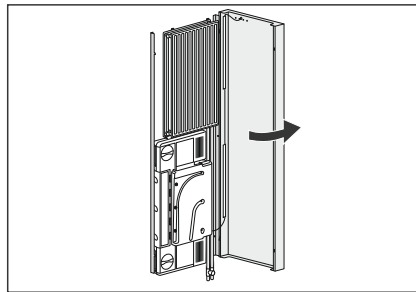
Order new filters at

www.climarad.nl/filters

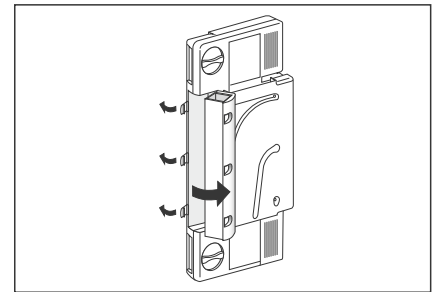
Replacing air supply filters



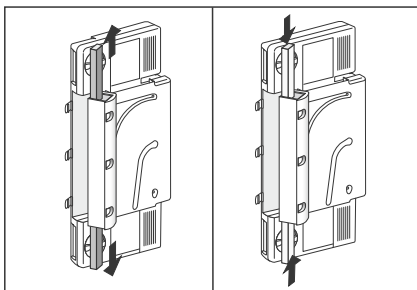
1. Switch off the device first by removing the plug from the socket.



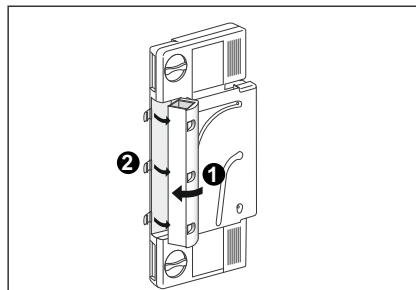
2. Open the door of the housing by lifting it up slightly on the left-hand side and then pulling it forward.



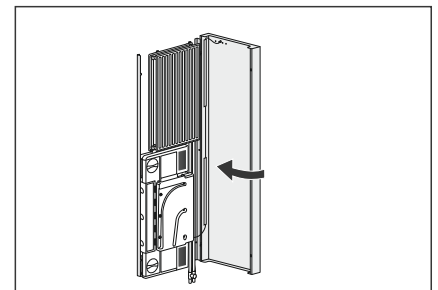
3. Open the three clips at the left-hand side of the unit and tilt the filter housing forwards.



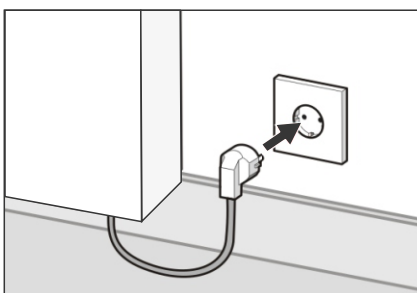
4. Slide the two dirty filters out of the filter housing and slide the two new filters fully into the filter housing.



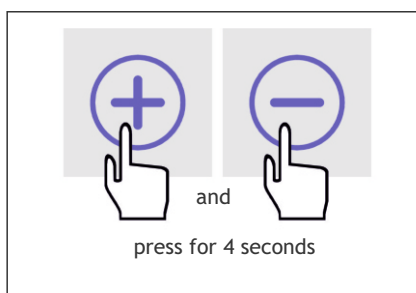
5. Tilt the filter housing back and secure with the three clips.



6. Close the door of the housing.



7. Push the plug back into the socket.

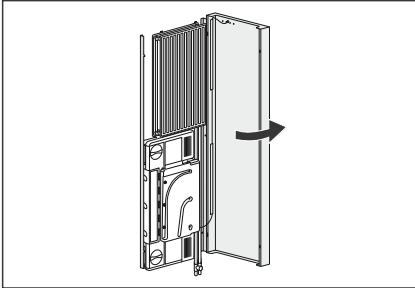


8. Reset the filter hour counter by simultaneously pressing on the + and - on the display for 4 seconds. The message 'Filter vervuild' will disappear.

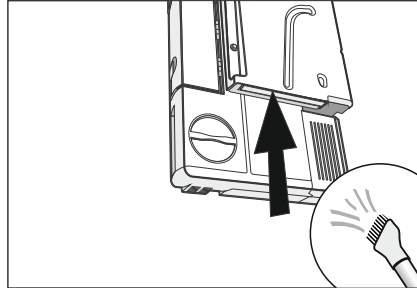
Important: Reset the filter hour counter only if you have replaced the filters!

Caution: Make sure the filter parts do not protrude from the filter housing or that tools are trapped between the filter housing and the radiator housing. This can damage the filter housing and cause air leaks along the edges.

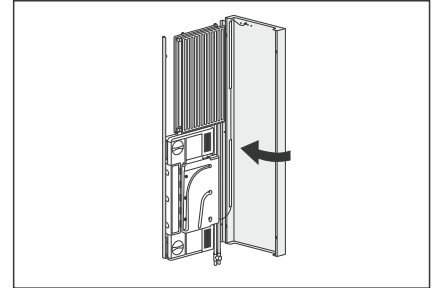
Cleaning the air outlet filters



1. Open the door of the housing.

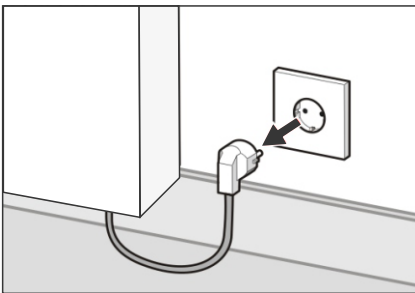


2. Vacuum the tray when dirty. You do not need to remove the air outlet filter.

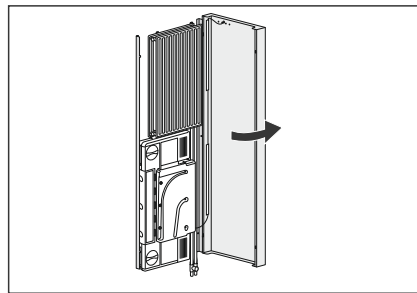


3. Close the door of the housing.

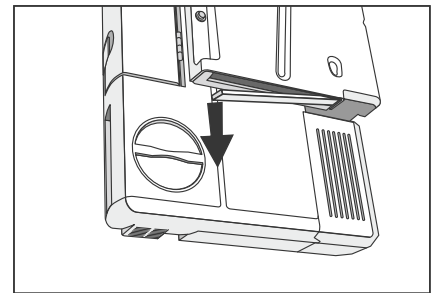
Replacing the air outlet filters



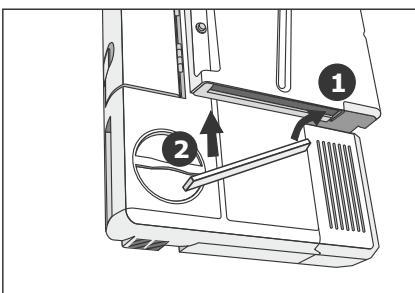
1. Switch off the device first by removing the plug from the socket.



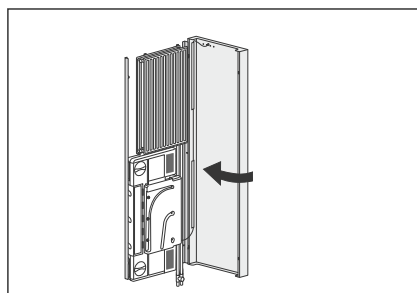
2. Open the door of the housing.



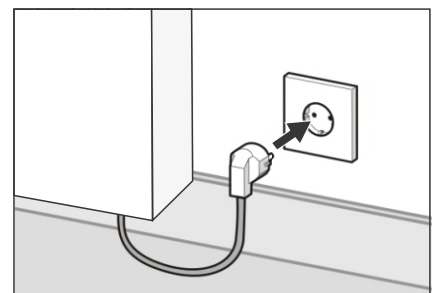
3. With a finger pull on the filter at the left-hand side of the opening and remove it.



4. Insert first the right-hand side of the new filter in the outlet opening. Then push the left-hand side of the filter in the opening.

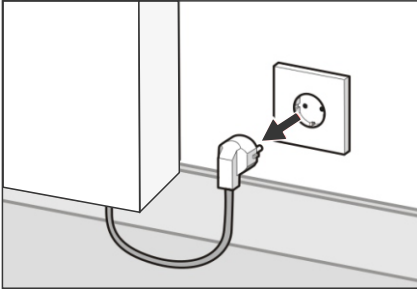


5. Close the door of the housing..

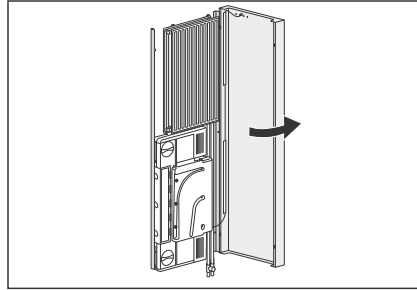


6. Push the plug back into the socket.

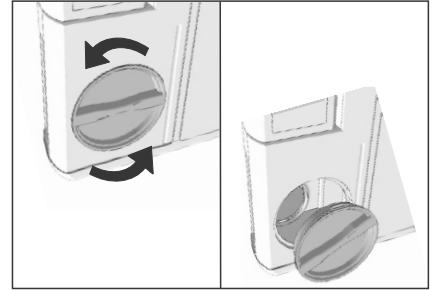
Cleaning the air ducts



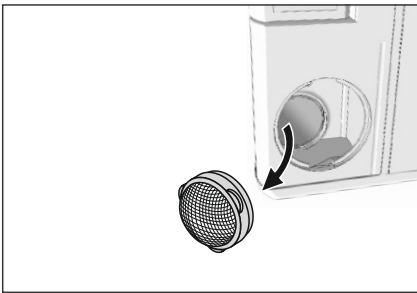
1. Switch off the device first by removing the plug from the socket.



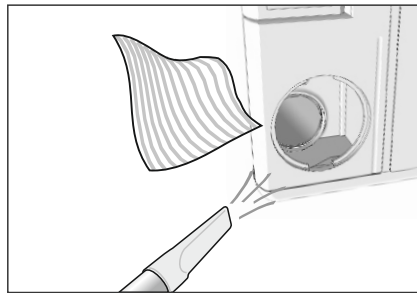
2. Open the door of the housing by lifting it up slightly on the left-hand side and then pulling it forward.



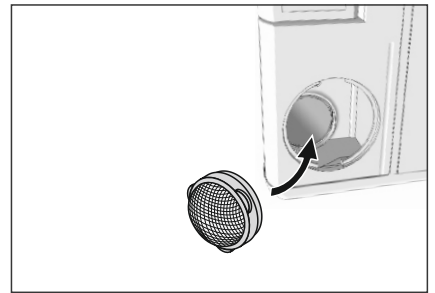
3. Remove the two caps by turning them to the left and removing them.



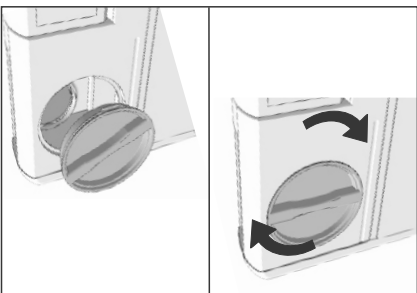
4. Grasp the round caps at the three tabs and remove them.



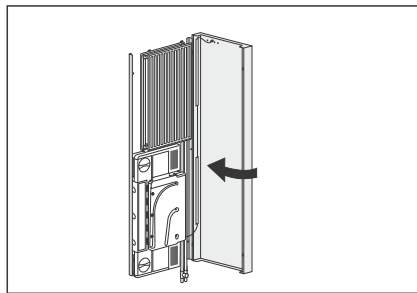
5. Remove any dirt from both channels with a vacuum cleaner or a soft cloth (do not use water).



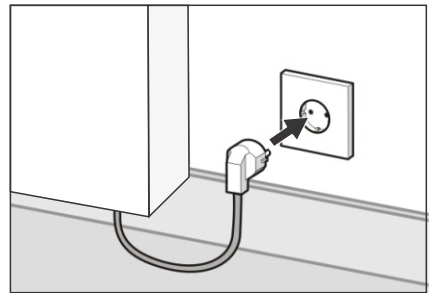
6. Insert the round caps.



7. Install both caps and tighten them well for a correct operation.



8. Close the door of the housing.



9. Push the plug back into the socket.