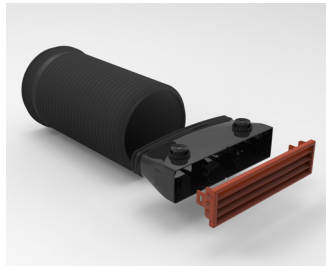


# ClimaRad wall ducting and grills

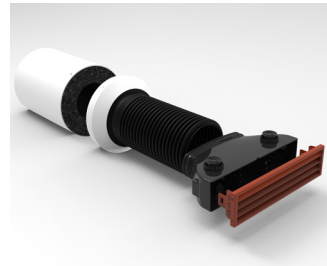
Our wall ducting is available in two versions: brick-sized or surface-mounted. Depending on the outside wall one of these versions is used. For both versions two sizes of bellows are available (a short and a medium/long version). The corresponding grilles are available in various RAL colours. Other RAL colours may be available upon request.



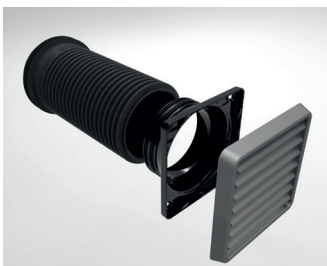
a) for wall thicknesses:  
long variant



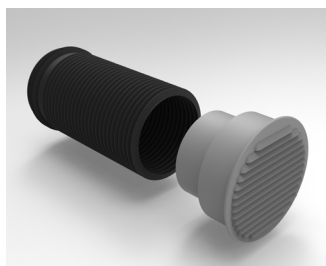
b) for wall thicknesses  
ClimaRad Ventura



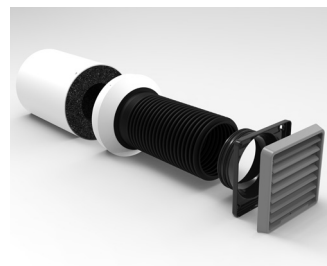
c) for wall thicknesses  
ClimaRad Ventura en S-Fan(+)



d) Short/medium wall ducting for  
surface-mounted grille for wall thicknesses



e) Wall ducting for surface-mounted grille  
for wall thicknesses: ClimaRad Ventura



f) Wall ducting for surface-mounted grille  
for wall thicknesses: ClimaRad Ventura en  
S-Fan(+)



g) Wall ducting for surface-mounted grille for wall  
thicknesses: sandwich panels

## Brick-sized wall ducting

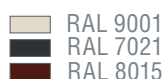
The ClimaRad brick-sized grilles resemble a brick and are therefore suitable for use in masonry walls made with bricks.

Feed-through with flexible bellows:

- a) Ø110 mm serving wall thickness 300-650 mm
- b) Ø150 mm for ClimaRad Ventura wall thickness 120-450 mm
- c) Ø110 mm sound-absorbing duct with damper casing Ø154 mm fitted with absorption foam for ClimaRad Ventura/S-Fan(+)\*.

Dimensions diffuser: 53x210 mm

## Colours\*\*



\* Available on request

\*\* Other RAL colours are available at an extra charge.

## Surface-mounted

ClimaRad surface-mounted grilles are specifically designed for smooth, flat walls.

Wall ducting for surface-mounted grilles are available in two types.

Feed-through with flexible bellows:

- d) Ø110 mm for wall thickness 120-350 mm
- d) 110 mm diameter for wall thicknesses 250-600 mm
- e) Ø150 mm for ClimaRad Ventura wall thickness 120-450 mm
- f) Ø110 mm sound-absorbing duct with damper casing Ø154 mm with absorption foam for ClimaRad Ventura/S-Fan(+)\*.

Specially developed pass-through for sandwich panels:

- g) Ø110 mm serving wall thicknesses 40-140 mm

Grille dimensions: 127x127 mm

Grille dimensions for ClimaRad Ventura: Ø175 mm

## Colours\*\*



**ClimaRad**®

Product information

## Table for pressure drop exterior grille including wall ducting

Surface-mounted grille	Flow [m³/h]	Pressure drop [Pa]
Flow of discharged air:	25	0
	50	7
	75	14
	100	26
	125	48
Flow of supplied air:	25	0
	50	5
	75	9
	100	18
	125	29

Brick-sized grille	Flow [m³/h]	Pressure drop [Pa]
Flow of discharged air:	25	1
	50	9
	75	20
	100	36
	125	47
Flow of supplied air:	25	2
	50	8
	75	11
	100	22
	125	39



1. Brick-sized RAL 8015 / 2. Surface-mounted galvanised steel RAL 9001 / 3. Roof tile ducting  
4. Vertical / 5. Surface-mounted grille for ClimaRad Ventura and ClimaRad S-Fan(+) RAL 9001 / 6. Through threshold (Movair)

# ClimaRad®

**ClimaRad BV**  
Lübeckstraat 25  
7575 EE Oldenzaal  
The Netherlands

Tel. +31 (0) 541 358 130  
e-mail: [info@climrad.com](mailto:info@climrad.com)  
[www.climarad.co.uk](http://www.climarad.co.uk)

View the ClimaRad Solutions  
for the residential, commercial and healthcare markets.